



Backer Rod Mfg. Inc.

www.backerrod.com

Customer Service (800) 595 2950

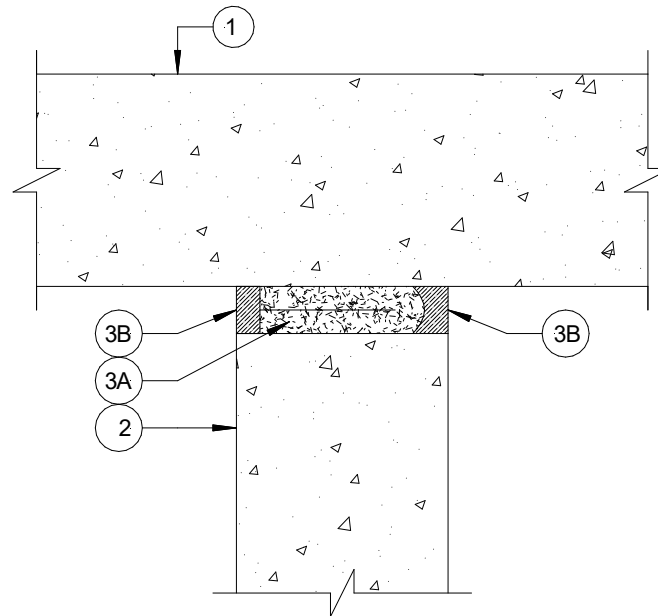


UL System No. HW-S-0073

September 23, 2005

Assembly Rating – 2 Hr

Joint Width – 3/4 In. (19 mm) Maximum



1. **Floor Assembly** – Min 4-1/2 in. (114 mm) thick steel-reinforced lightweight or normal weight (100 – 150 pcf or 1600-2400 kg/m³) structural concrete.
2. **Wall Assembly** – Min 4-1/2 in. (114 mm) thick reinforced lightweight or normal weight (100 – 150 pcf or 1600-2400 kg/m³) structural concrete. Wall may also be constructed of ant UL **Classified Concrete Blocks***

See **Concrete Blocks** (CATZ) category in the Fire Resistance Directory for names of manufacturers

3. **Joint System** – Max separation between bottom of floor and top of wall is 3/4 in. (19 mm) The joint system shall consist of the following:
 - A. **Forming Material*** - A nom 6 in. (152 mm) width of forming material shall be folded in half, compressed min 25 percent and firmly packed into joint opening as a permanent form. Forming material to be recessed from each surface of wall to accommodate the required thickness of fill material.

BACKER ROD MFG. INC. – ULTRA BLOCK®
 - B. **Fill, Void or Cavity Material*** - Min 1/2 in. (13 mm) thickness of fill material applied within the joint, flush with each surface of wall.

LYMTAL INTERNATIONAL INC – ISO-FLEX 880-GB, ISO-FLEX 881 and ISO-FLEX 830

* Indicates such products shall bear the UL or cUL Certification Mark for jurisdictions employing the UL or cUL Certification (such as Canada), respectively.

Reprinted from the Online Certifications Directory with permission from UL

© 2018 UL LLC